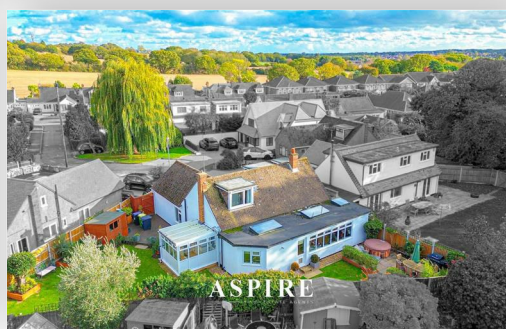


To arrange a viewing contact us
today on 01268 777400



Nelson Close, Rayleigh Guide price £725,000

Aspire Estate Agents Rayleigh are delighted to present this exceptional five-bedroom detached family home, perfectly positioned within a quiet and highly sought-after cul-de-sac in Rayleigh. Offering an impressive 2,000 sq. ft. (approx.) of flexible living space, this property combines elegance, practicality, and versatility — ideal for families seeking multi-generational living or the possibility of a self-contained annexe within the property. Guide Price £725,000 to £750,000.

Accommodation -

Reception Hall - UPVC door with glazed insets leading to a welcoming hall with laminate flooring, stairs to first floor, coving, radiator, power points, coving, spot lighting,

Lounge - 5.79m x 3.58m (19' x 11'9) - UPVC double glazed window to front and sliding doors to the dining room, feature fireplace with matching hearth and mantle, gas living flame fire, coving, radiator, power & Tv points.

Dining Room - 5.66m x 3.05m (18'7 x 10') - UPVC double glazed windows & door to rear, roof light window, laminate flooring, radiator, power points, open way to kitchen/breakfast room

Kitchen/Breakfast Room - 5.41m x 4.11m (17'9 x 13'6) - UPVC double glazed window to rear & further roof light window, fitted with a quality range of cream Shaker style eye level & base level units matching full height cupboards to one wall & central island incorporating a breakfast bar,, wood block worktops incorporating stainless steel 1.5 sink drainer, 5 ring hob with extractor fan & two separate full sized ovens, integrated dishwasher, larder Fridge & larder freezer, spot lighting, laminate flooring, boiler cupboard, power & Tv points,

Utility Room - 2.92m x 2.51m (9'7 x 8'3) - Double glazed windows to three elevations & door to garden, fitted base units with worktops above, space for tumble dryer, laminate flooring, power points,

Bedroom 1 (Ground Floor) - 4.27m x 3.07m (14' x 10'1) - UPVC double glazed window to front, fitted wardrobes to one wall, radiator, power & coving,

Bedroom 2 (Ground Floor) - 3.12m x 2.84m (10'3 x 9'4) - UPVC double glazed window to side, coving, radiator, power points,

Shower Room (Ground Floor) - UPVC double glazed window to side, recently installed white suite comprising a large walk in shower with glazed door thermostatically controlled rain fall shower & hand attachment, wash hand basin with cupboards below, low level WC, fitted pull out, storage cupboard, heated towel rail, quality tiled walls & matching flooring, spot lighting & extractor fan,

Door from Dining area, leading to Annexe. Inner Hall - Spot lighting open wardrobe area with fitted hanging rails.

Bedroom 3 - 4.34m x 2.24m (14'3 x 7'4) - UPVC double glazed window to front, radiator, power & Tv points,

Shower Room - Roof light window, modern white suite comprising low level WC, vanity wash hand basin with storage cupboards below, large shower cubicle splash back wall tiling & matching floor, heated towel rail, spot lighting, extractor fan

First Floor Landing - Velux sky light window to the rear elevation, fitted storage cupboards, spot lighting

Bedroom 4 - 3.45m x 3.18m (11'4 x 10'5) - UPVC double glazed window to front, radiator, power points,

En-Suite Bathroom - UPVC double glazed window to front, white suite comprising, panelled bath with shower/mixer taps, low level WC, pedestal wash hand bason, tiled walls with matching floor, heated towel rail, spot lighting, extractor fan,

Bedroom 5/Study - 3.10m x 2.84m (10'2 x 9'4) - UPVC double glazed window to rear fitted wardrobes to one wall & fitted desk unit, radiator, power points,

Outside -

Front Garden - Mainly laid to block paving providing extensive parking side gate to rear garden

Rear Garden - A delightful wrap around garden with paved patio with raised shrub beds, lawn area's with raised sleeper beds & further decking area, with space for Hot tub and lighting, tap and external power supply. Shed to rear of garden.

Ground Floor

A welcoming reception hall with quality flooring and spotlighting sets the tone for the home.

At the heart of the property sits a stunning kitchen/breakfast room featuring classic Shaker-style cabinetry, woodblock worktops, a central island with breakfast bar, and premium integrated appliances including a five-ring hob, double oven, dishwasher, and full-height fridge and freezer. The kitchen is bathed in natural light from multiple windows and roof lights, creating a perfect hub for family life and entertaining.

The 19' lounge enjoys a bright dual aspect, with a feature fireplace and seamless flow through sliding doors into the dining room, which offers direct garden access.

A dedicated utility room with additional storage and workspace provides access to the garden.

The ground floor layout also offers immense flexibility — two double bedrooms and a modern shower room are perfect for guests or extended family. A connecting inner hall leads to a further double bedroom with its own private shower room, creating an ideal annexe setup for independent living.

First Floor

Upstairs, the principal bedroom is generous in size and benefits from a stylish en-suite bathroom with contemporary tiling and a heated towel rail.

A further double bedroom features fitted wardrobes and a built-in desk, making it equally suitable as a study or home office.

Ample eaves and cupboard storage, spot lighting, and Velux windows complete this well-planned upper floor.

Outside

The wrap-around garden offers a superb blend of relaxation and practicality — thoughtfully landscaped with lawned areas, raised sleeper borders, and a choice of decked and paved terraces perfect for outdoor dining and entertaining. There is external lighting, power, and a water tap, ensuring it's both beautiful and functional.

To the front, an extensive block-paved driveway provides ample parking for multiple vehicles, with a gated side access leading to the garden.

Location

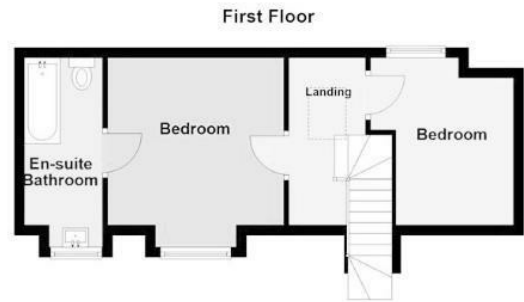
Tucked away in one of Rayleigh's most desirable cul-de-sac settings, this property enjoys both tranquillity and convenience.

Education: Within the sought-after Fitzwimarc and Edward Francis School catchments — both renowned for excellence.

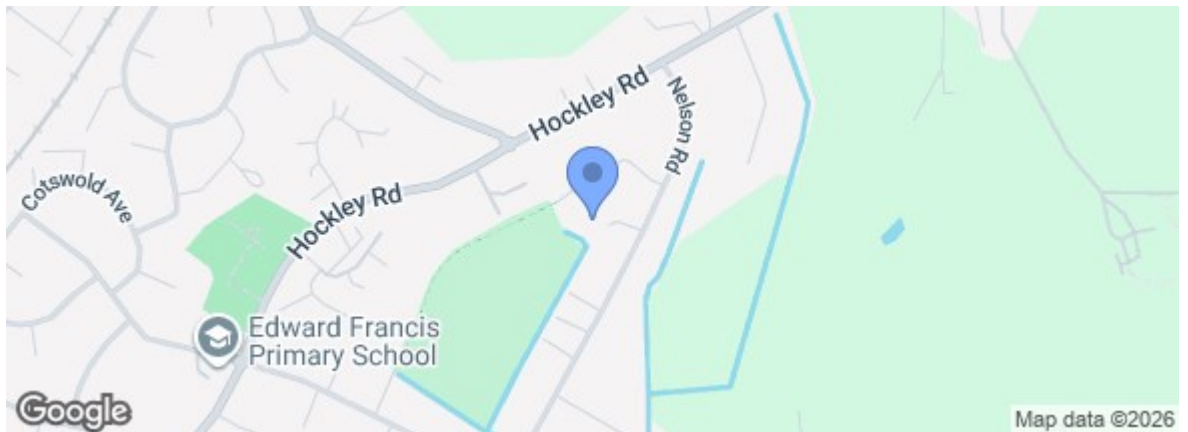
Transport: Easy access to Rayleigh Station (direct trains to London Liverpool Street in around 45 minutes), plus excellent road connections to the A127 and A130.

Recreation: A short stroll from Victoria Park, Rayleigh Mount, and picturesque countryside walks.

Amenities: Close to Rayleigh High Street, offering boutique shops, restaurants, cafés, and supermarkets.



Energy Efficiency Rating		Current	Potential
Very energy efficient - lower running costs			
(92 plus)	A		
(81-91)	B		
(69-80)	C		
(55-68)	D		
(39-54)	E		
(21-38)	F		
(1-20)	G		
Not energy efficient - higher running costs			
England & Wales		EU Directive 2002/91/EC	
Environmental Impact (CO ₂) Rating		Current	Potential
Very environmentally friendly - lower CO ₂ emissions			
(92 plus)	A		
(81-91)	B		
(69-80)	C		
(55-68)	D		
(39-54)	E		
(21-38)	F		
(1-20)	G		
Not environmentally friendly - higher CO ₂ emissions			
England & Wales		EU Directive 2002/91/EC	



Under the Property Misdescriptions Act 1991 we make every effort to ensure our sales details are accurate but they are a general outline and do not constitute any part of an offer or contract. Any services, equipment and fittings have not been tested and no warranty can be given as to their condition. We strongly recommend that all the information provided be verified by your advisors and in particular, measurements required for a specific purpose such as fitted furniture or carpets. Please tell us if you have any problems and members of our branches will help either over the phone or in person. A copy of our complaints procedure is available on request. The details are issued on the strict understanding that any negotiations in respect of the property named herein are conducted through Aspire Estate Agents.